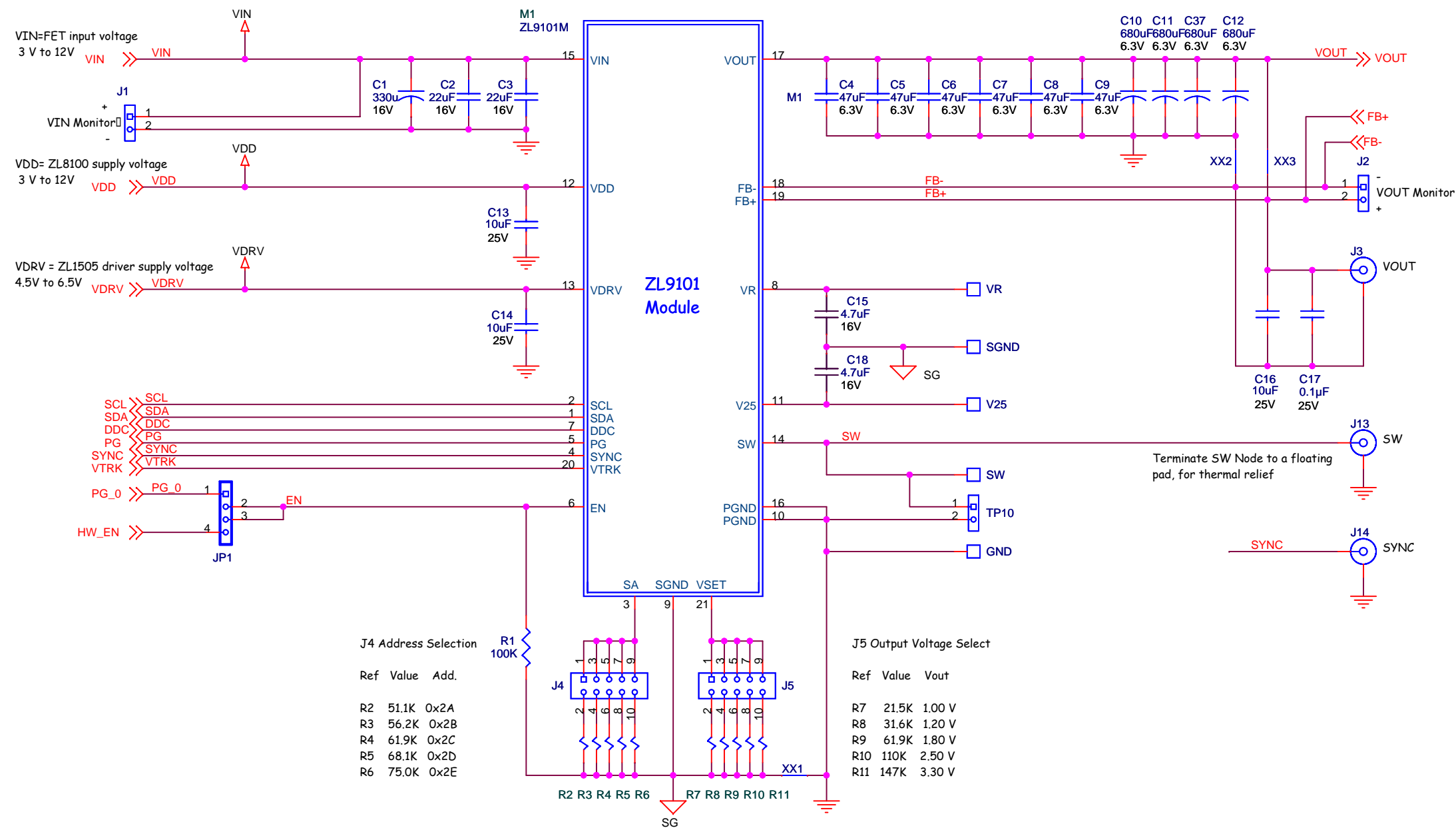


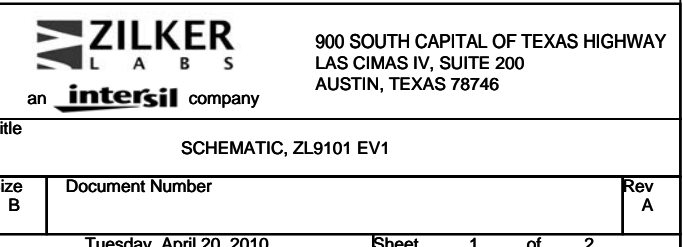
# ZL9101 Circuit



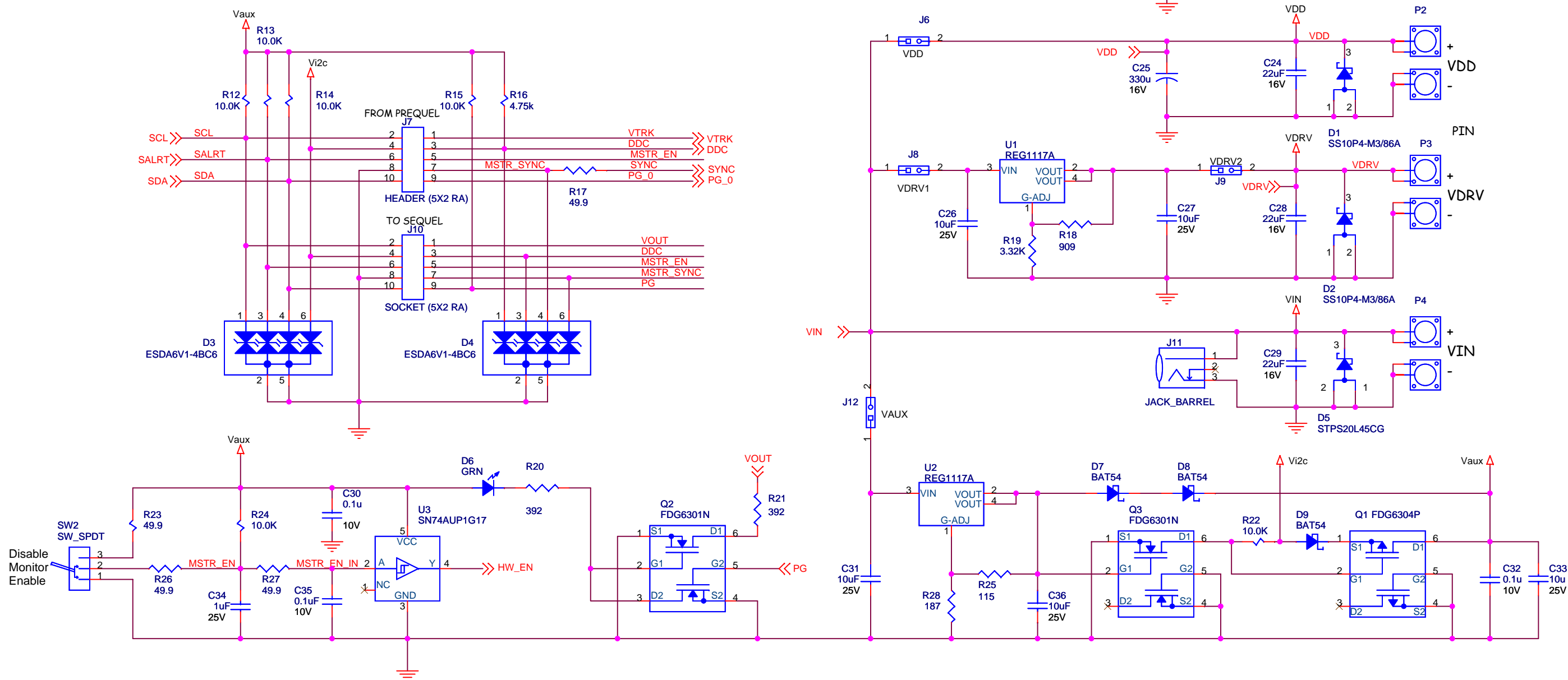
The reference designs contained in this document are for reference and example purpose only. THE REFERENCE DESIGNS ARE PROVIDED "AS IS" AND "WITH ALL FAULTS" AND ZILKER LABS DISCLAIMS ALL WARRANTIES, WHETHER DIRECT, INDIRECT, CONSEQUENTIAL (INCLUDING LOSS OF PROFITS), OR OTHERWISE, RESULTING FROM THE REFERENCE DESIGNS OR ANY USE THEREOF.

Any use of such reference designs is at your own risk and you agree to indemnify Zilker Labs for any damages resulting from such use.

INTERSIL PROPRIETARY AND CONFIDENTIAL



# Module Interface



INTERSIL PROPRIETARY AND CONFIDENTIAL

**ZILKER**  
L A B S  
an **intersil** company

900 SOUTH CAPITAL OF TEXAS HIGHWAY  
LAS CIMAS IV, SUITE 200  
AUSTIN, TEXAS 78746

Title		
SCHEMATIC, ZL9101 Interface EV1		
Size	Document Number	Rev
B		A
Tuesday, April 20, 2010		
Sheet 2 of 2		