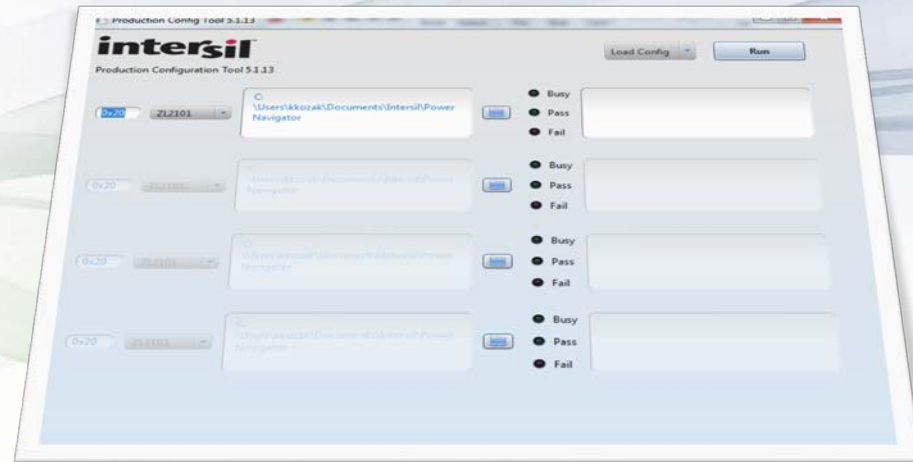


Production Configuration Utility

Version 5.3.45

USER GUIDE



PCT Overview

- **What is PCT?**

- Production configuration tool for quick loading and verification of configuration files into Intersil Digital Power controller/modules.

- **Features**

- Program or verify configuration for multiple devices at the same time
- Supports all devices supported by PowerNavigator
- Data logging to error.txt file

- **Both standard Configuration files and production HEX files can be used**

- PCT will load and verify either format

PCT 5.3.45 – Supported Devices

- **Integrated FET Digital Regulators: ZL2101, ZL2102**
- **Digital Controllers: ZL6105, ZL8101, ZL880x, ZLS4010**
- **Digital Multiphase: ISL6388, ISL6398, ISL681xx, ISL691xx**
- **Digital Modules: ZL9006M, ZL9010M, ZL9101M, ZL9117M, ISL827xM**

Instructions

- **Installation**

- Double-click “configCheckSetup.exe” and follow instructions
- Installer will place icon on Desktop and inside Start Menu

- **Running**

- Connect ZLUSBEVAL3Z dongle to computer and power system’s PMBus header
- Ensure input voltage is provided to all devices to be programmed.

Device Selection Screen

File

intersil™
Production Configuration Tool 5.3.45

Load Config Run

Select device type

0x28 ZL8802 C:\Users\BHOWELL\Documents\Intersil\PowerNavigator

0x2E ZL2102 C:\Users\BHOWELL\Documents\Intersil\PowerNavigator

0x25 ISL8272M C:\Users\BHOWELL\Documents\Intersil\PowerNavigator

0x60 ISL69124 C:\Users\BHOWELL\Documents\Intersil\PowerNavigator

Busy Pass Fail

Busy Pass Fail

Busy Pass Fail

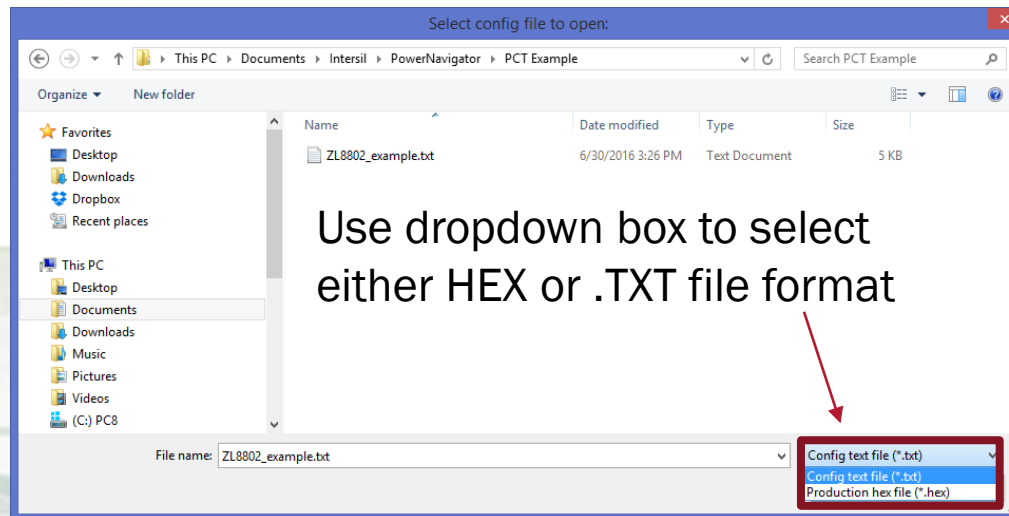
Busy Pass Fail

Set Device PMBus address

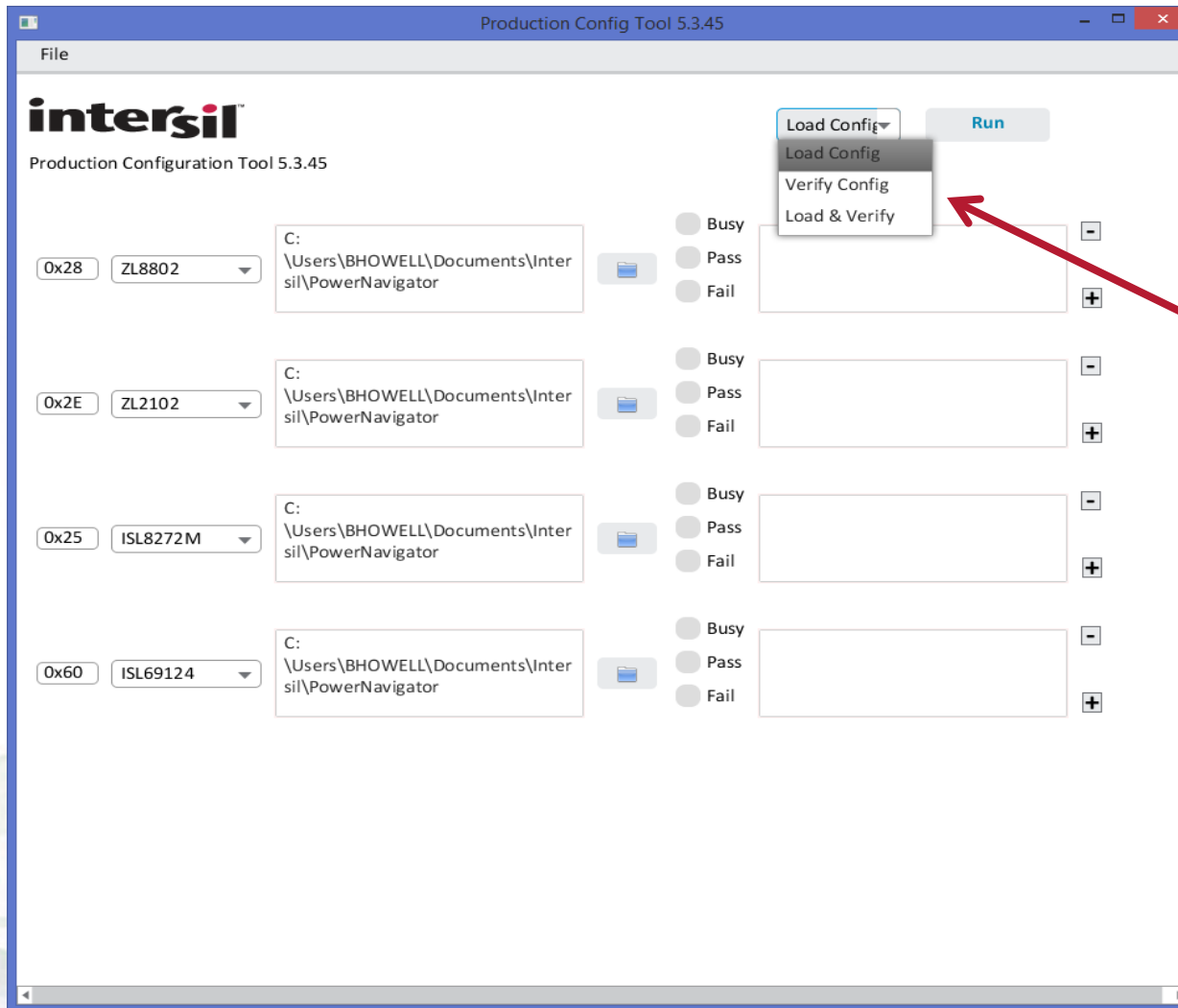
Navigate to configuration file to be loaded

PCT: Hex and .TXT file Support

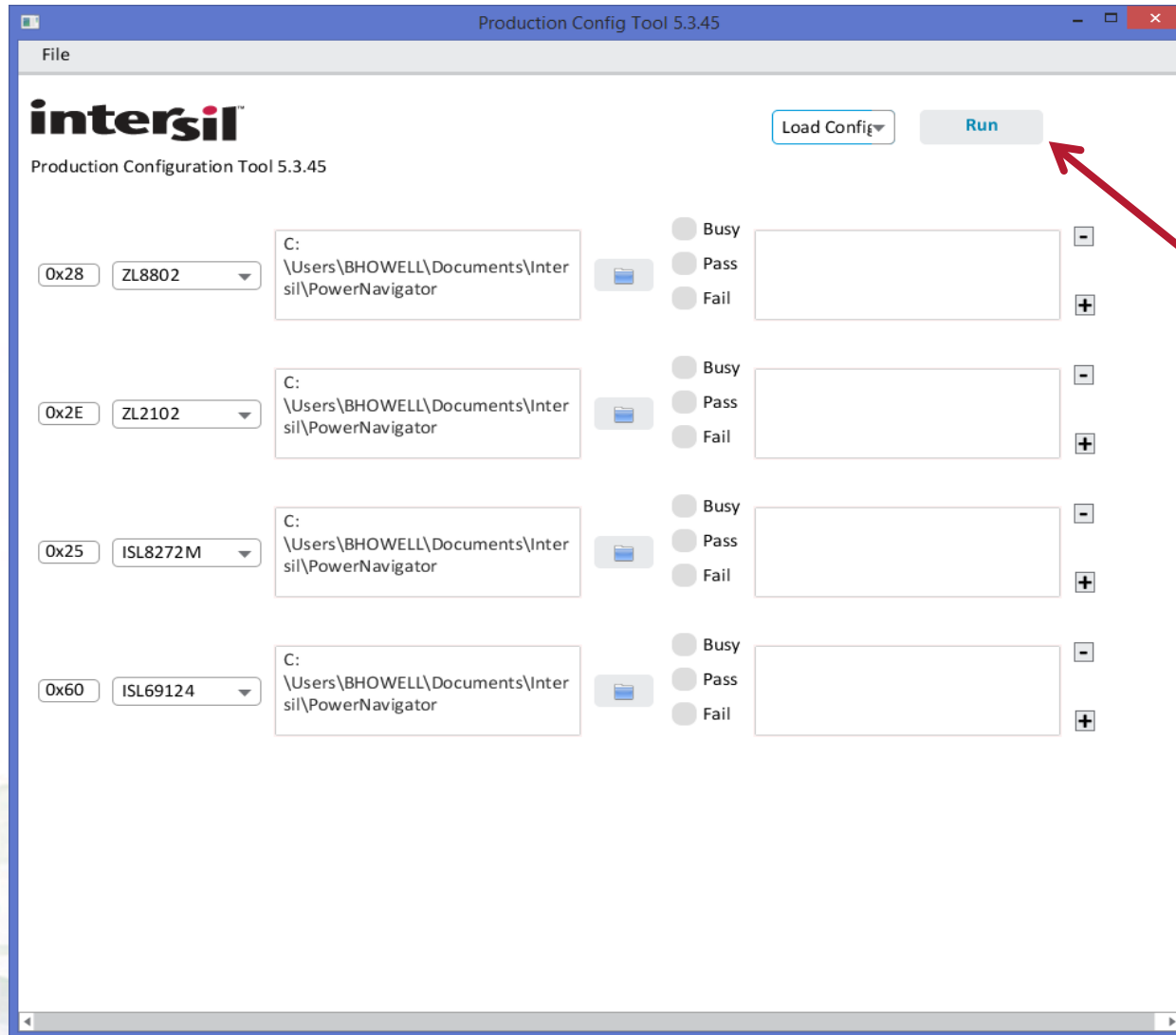
- **PCT supports both HEX and .TXT (Intersil configuration files) file load**
 - Digital Multiphase products only support HEX format
 - Digital Point of Load and Digital Modules support both HEX and TXT
- **When selecting file, use drop down box to select either .txt or .hex files**



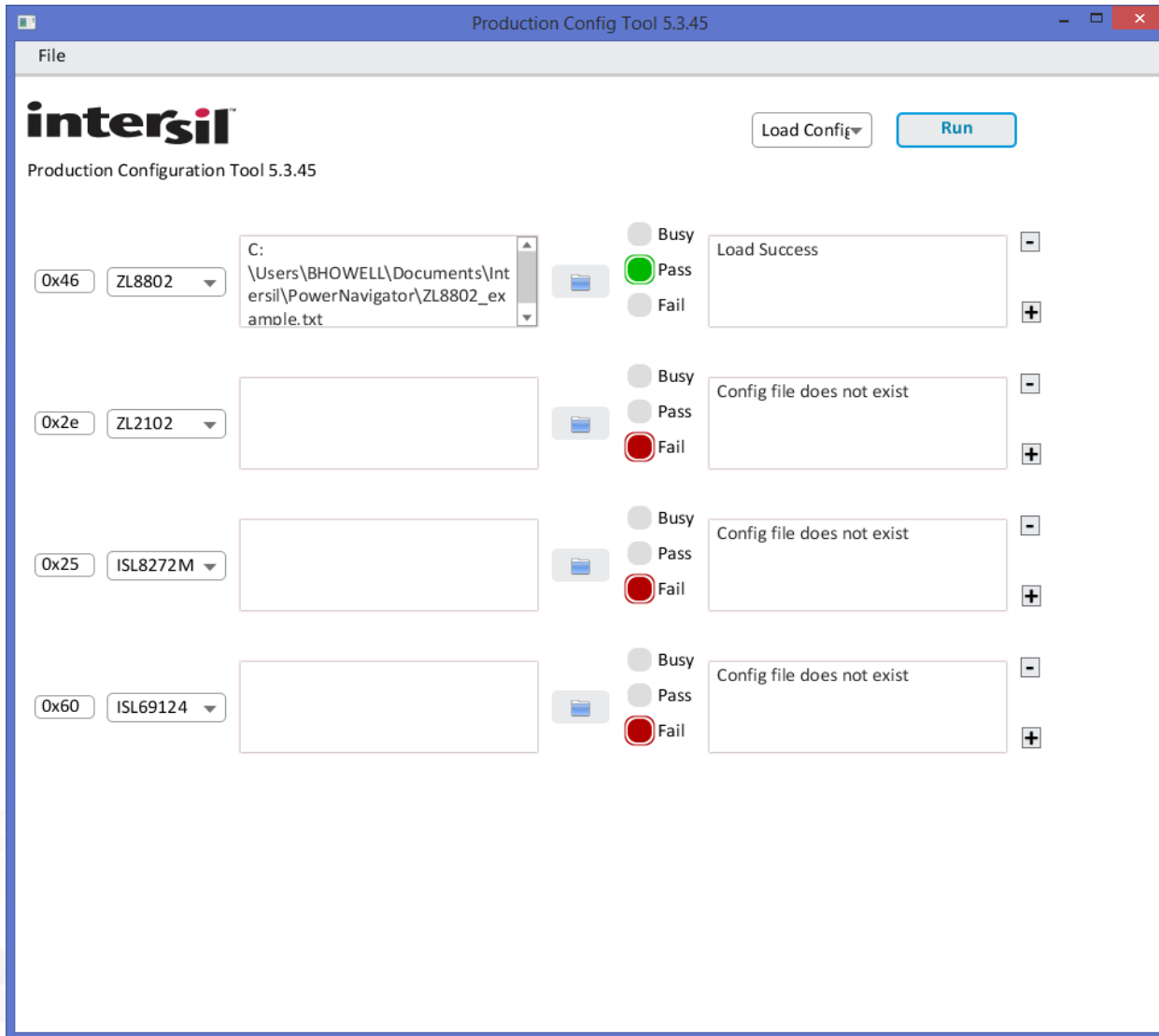
Modes: **Load**: config file to device or
Verify: existing device against a config file
Load & Verify: Load and Verify in single step



Press “Run” to start load or verify process.
Status lights show pass/fail results



Configuration File Load



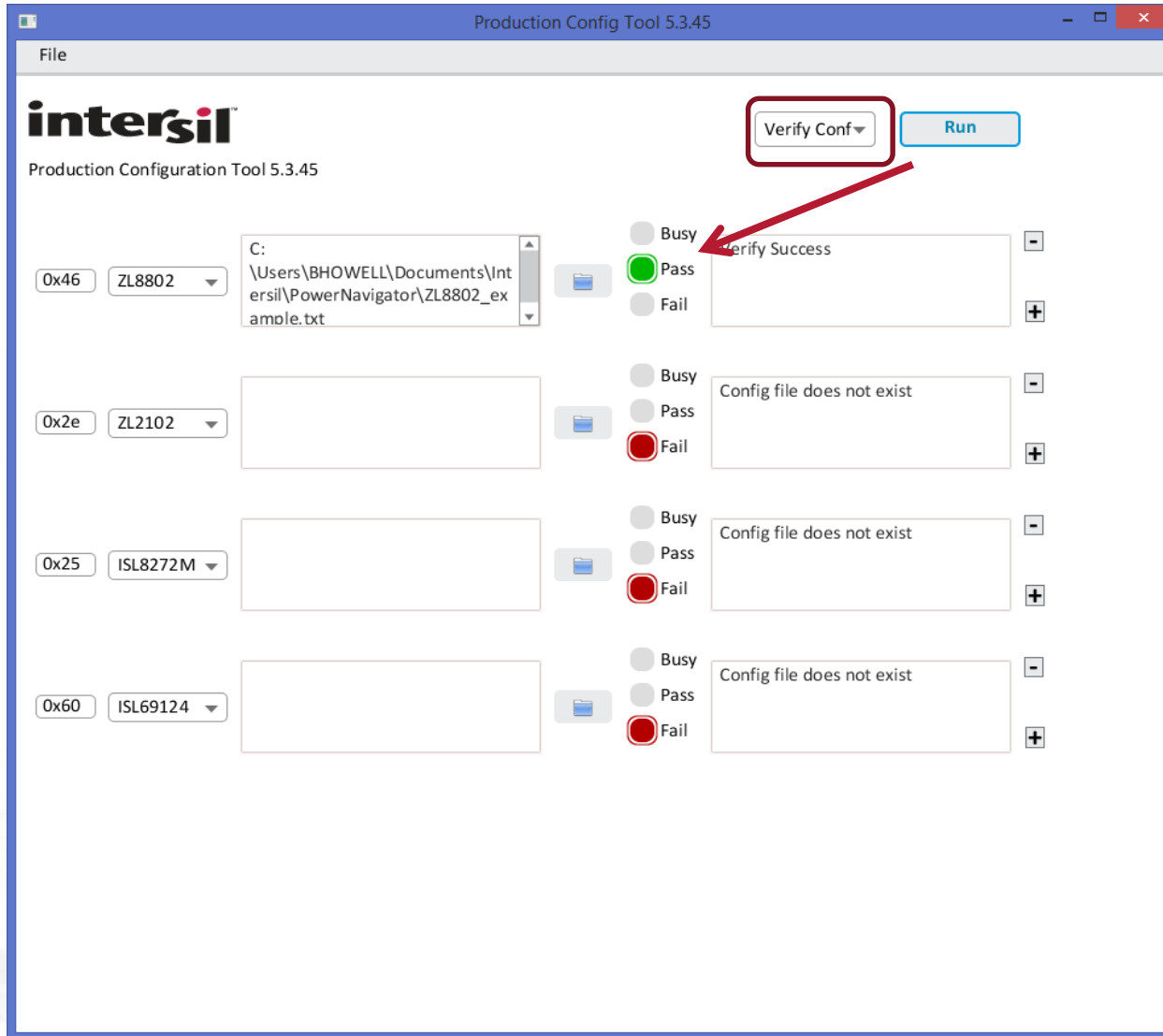
Successful Config Load

Unsuccessful Config Load

Unsuccessful Config Load

Unsuccessful Config Load

Configuration File Verify



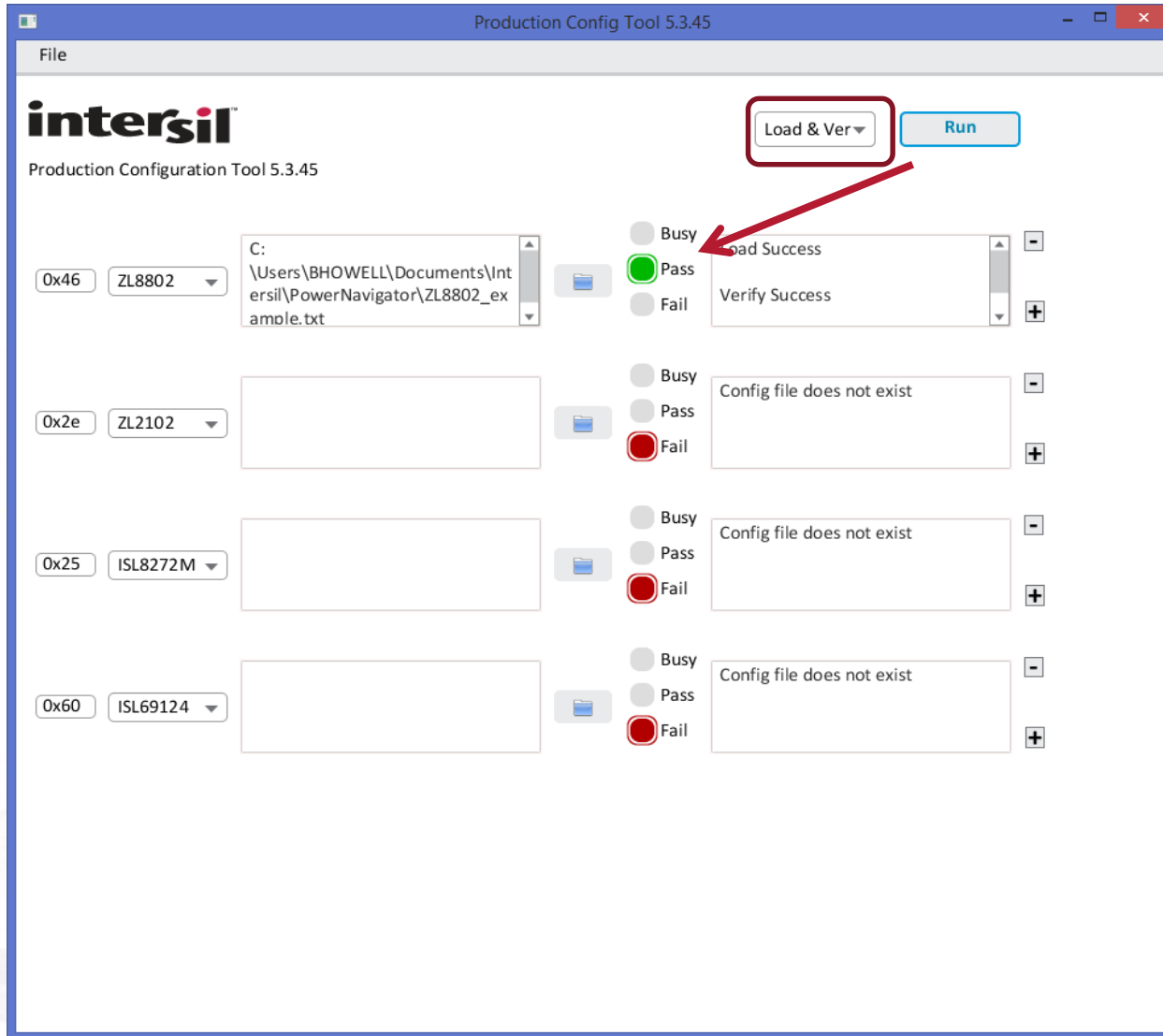
Successful Config Verify

Unsuccessful Config Verify

Unsuccessful Config Verify

Unsuccessful Config Verify

Configuration File Load & Verify



Successful Config
Load & Verify

Unsuccessful Config
Verify

Unsuccessful Config
Verify

Unsuccessful Config
Verify

Adding additional Rows

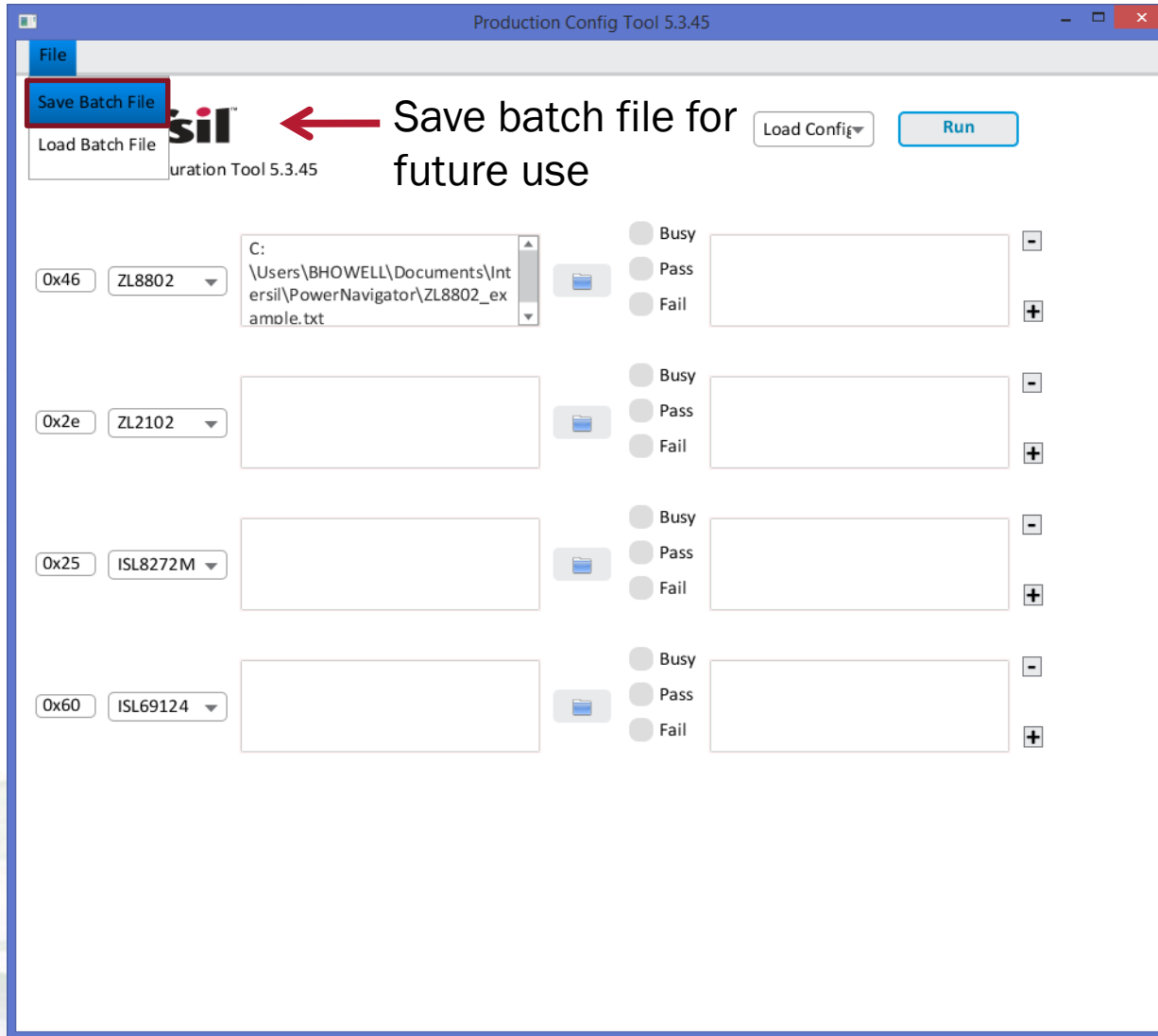
The screenshot shows the 'Production Config Tool 5.3.45' window. The interface includes a menu bar with 'File', the Intersil logo, and buttons for 'Load Config' and 'Run'. Below the logo, the text 'Production Configuration Tool 5.3.45' is displayed. The main area contains a list of four device configurations. Each configuration row consists of a device ID (e.g., 0x46, 0x2e, 0x25, 0x60), a device name (e.g., ZL8802, ZL2102, ISL8272M, ISL69124), a file path (only shown for the first device), and a set of three radio buttons labeled 'Busy', 'Pass', and 'Fail'. A red arrow points to a plus sign button located at the bottom right of the configuration list, indicating the action to add a new row.

Click to add rows to program additional devices

PCT – Batch Files

- **PCT allows users to create “Batch Files”, saving PCT configuration for future use**
 - Save address and device types
 - Automatically points to saved configuration files
 - Individual Batch files can be saved on a per board basis.

Saving Batch files for future use



intersilTM

www.intersil.com